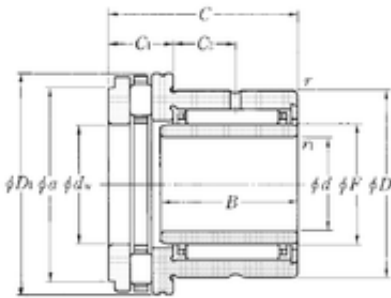
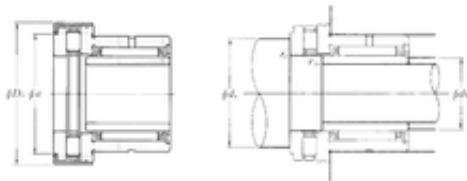




# FML ske Manufacturing Co., Ltd



## 45 mm x 62 mm x 25 mm NTN NKXR50T2Z+IR45 × 50 × 25 complex bearings

Bearing No. NKXR50T2Z+IR45 × 50 × 25

NKXR50T2Z+IR45 × 50 × 25 Bearing 2D drawings and 3D CAD models

Bore Diameter	45 mm
Outer Diameter	71,5 mm
d	45 mm
d1	50 mm
F	50 mm
D	62 mm
D1	70 mm
D2	71,5 mm
B	25 mm
C	35 mm
ra1 max.	0,6 mm
a	65,5 mm
r min.	0,6 mm
r1 min.	0,6 mm
C1	14 mm
da min.	66 mm
db min	48 mm
ra max.	0,6 mm
C2	10 mm
Weight	0,4 Kg
Dynamic load rating radial (C)	27,9 kN
Dynamic load rating axial (C)	48 kN
Static load rating radial (C0)	62 kN
Static load rating axial (C0)	150 kN



# FML ske Manufacturing Co., Ltd

(Grease) Lubrication Speed	1000 r/min
----------------------------	------------