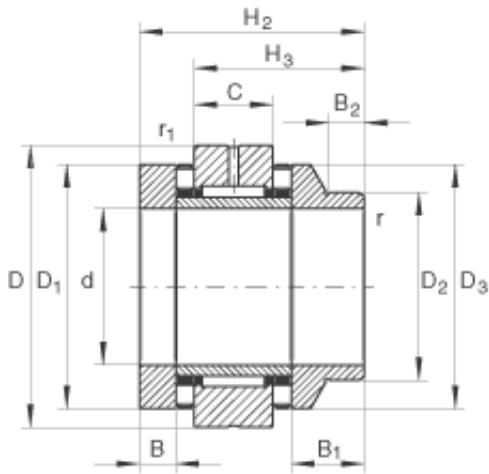




FML ske Manufacturing Co., Ltd



60 mm x 120 mm x 17,5 mm INA ZARN60120-L-TV complex bearings

Bearing No. ZARN60120-L-TV

ZARN60120-L-TV Bearing 2D drawings and 3D CAD models

| | |
|--------------------|--|
| Size | 60x120x103 mm |
| Bore Diameter | 60 mm |
| Outer Diameter | 120 mm |
| Width | 103 mm |
| d | 60 mm |
| D | 120 mm |
| H ₂ | 103 mm |
| B | 17,5 mm |
| B ₁ | 38,5 mm |
| B ₂ | 16 mm |
| C | 25 mm |
| D ₁ | 105 mm |
| D ₂ | 90 mm |
| D ₃ | 105 mm |
| D _{a max} | 106 mm |
| d _{a min} | 88 mm |
| H ₃ | 74,5 mm |
| r _{1 min} | 0,6 mm |
| r _{min} | 0,3 mm |
| m | 4,85 kg / Weight |
| C _a | 187000 N / Dynamic load rating (axial) |
| C _{0a} | 550000 N / Static load rating (axial) |
| | |



FML ske Manufacturing Co., Ltd

| | |
|----------------------|--|
| C_r | 44500 N / Dynamic load rating (radial) |
| C_{0r} | 92000 N / Static load rating (radial) |
| $n_{G\ OI}$ | 2700 1/min / Limiting speed for oil lubrication (valid only with adequate oil cooling) |
| $n_{G\ Fett}$ | 950 1/min / Limiting speed for grease lubrication |
| M_{RL} | 4,2 Nm / Bearing frictional torque |
| C_{aL} | 5300 N/ μ m / Axial rigidity |
| C_{kL} | 4300 Nm/mrad / Tilting rigidity |
| M_m | 54,5 kg x cm ² / Mass moment of inertia for rotating inner ring |
| | 1 μ m / Axial runout (The axial runout data for screw drive bearing arrangements are based on the rotating inner ring) |
| | ZMA60/98 / Designation of recommended INA locknut |
| Category | Ball Bearings |
| Inventory | 0.0 |
| Manufacturer Name | SCHAEFFLER GROUP |
| Minimum Buy Quantity | N/A |
| Weight / Kilogram | 5.808 |
| EAN | 4012802078466 |
| Product Group | B00234 |