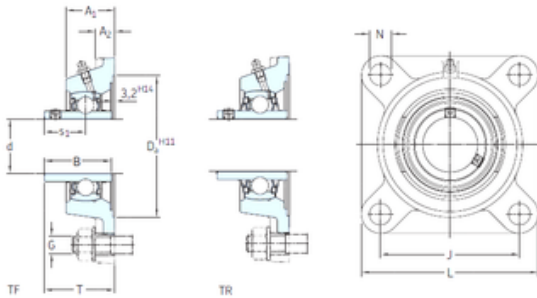




FML ske Manufacturing Co., Ltd

SKF FYJ 20 TF bearing units

Bearing No. FYJ 20 TF



FYJ 20 TF Bearing 2D drawings and 3D CAD models

Bore Diameter	20 mm
d	20 mm
Da	68,3 mm
s1	18,3 mm
A1	25,5 mm
B	31 mm
G	10 mm
J	64 mm
L	86 mm
N	12 mm
T	33,3 mm
A2	12 mm
Weight	0,65 Kg
Basic dynamic load rating (C)	12,7 kN
Basic static load rating (C0)	6,55 kN
Fatigue load limit (Pu)	0,28
Category	Bearings
Inventory	0.0
Manufacturer Name	SKF
Minimum Buy Quantity	N/A
UNSPSC	31171501
Weight / Kilogram	0
EAN	7316570348576
Product Group	B00234
Housing material	Cast iron
D _a	68.3 mm



FML ske Manufacturing Co., Ltd

D_{b1}	58 mm
D_{b2}	64 mm
A	25.5 mm
A_1	11 mm
A_3	3.2 mm
s_1	18.3 mm
R_G	1/4-28 UNF
R_1	17 mm
D_N	6.5 mm
SW_N	7 mm
G_N	1/4-28 SAE-LT
J_6	74 mm
J_7	16 mm
N_4	4 mm
Basic dynamic load rating C	12.7 kN
Basic static load rating C_0	6.55 kN
Fatigue load limit P_u	0.28 kN
Limiting speed	8500 r/min
Mass bearing unit	0.51 kg
Thread grub screw G_2	M6x0.75
Hexagonal key size for grub screw N	3 mm
Recommended tightening torque for grub screw	4 N · m
Recommended diameter for attachment bolts, mm G	10 mm
Recommended diameter for attachment bolts, inch G	0.375 in