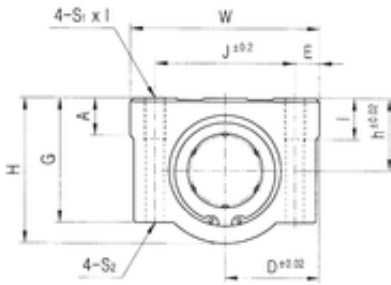
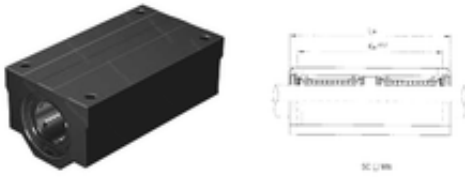




FML ske Manufacturing Co., Ltd



SC10W-B Bearing 2D drawings and 3D CAD models

Samick SC10W-B linear bearings

Bearing No. SC10W-B

Bore Diameter	10 mm
d	10 mm
h	13 mm
A	8 mm
D	20 mm
E	6 mm
G	21 mm
H	26 mm
J	28 mm
K	46 mm
L	68 mm
S1x	M5
S2	4,3 mm
W	40 mm
Weight	0,147 Kg
Basic dynamic load rating (C)	0,59 kN