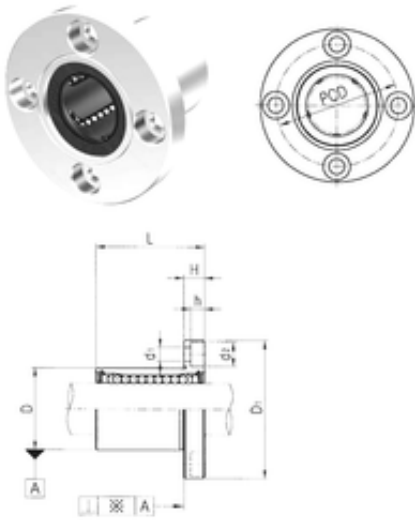




FML ske Manufacturing Co., Ltd



LMEF12 Bearing 2D drawings and 3D CAD models

Samick LMEF12 linear bearings

Bearing No. LMEF12

Bore Diameter	12 mm
Outer Diameter	22 mm
d	12 mm
D	22 mm
d1	4,5 mm
d2	8 mm
h	4,4 mm
D1	42 mm
H	6 mm
L	32 mm
PCD	32 mm
Tolerance perpendicularity (C)	12
Weight	0,086 Kg
Basic dynamic load rating (C)	0,41 kN