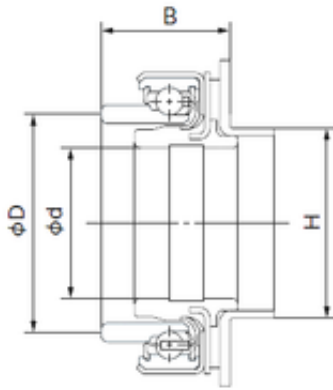




FML ske Manufacturing Co., Ltd

35 mm x 50 mm x 26.9 mm NACHI 50SCRN37P-4 deep groove ball bearings



Bearing No. 50SCRN37P-4

Size	35x50x26.9 mm
Bore Diameter	35 mm
Outer Diameter	50 mm
Width	26.9 mm
d	35 mm
D	50 mm
B	26.9 mm
H	44 mm

50SCRN37P-4 Bearing 2D drawings and 3D CAD models